

Note: roof covering & underlayment as req'd by code.

Note: wall covering & water resistive barrier as req'd by code.

See SIP-101 for connection information.

R-Control Wood Screw @ 12" o.c.

Bolts spaced as req'd by specific design.

Continuous R-Control SIP wall.

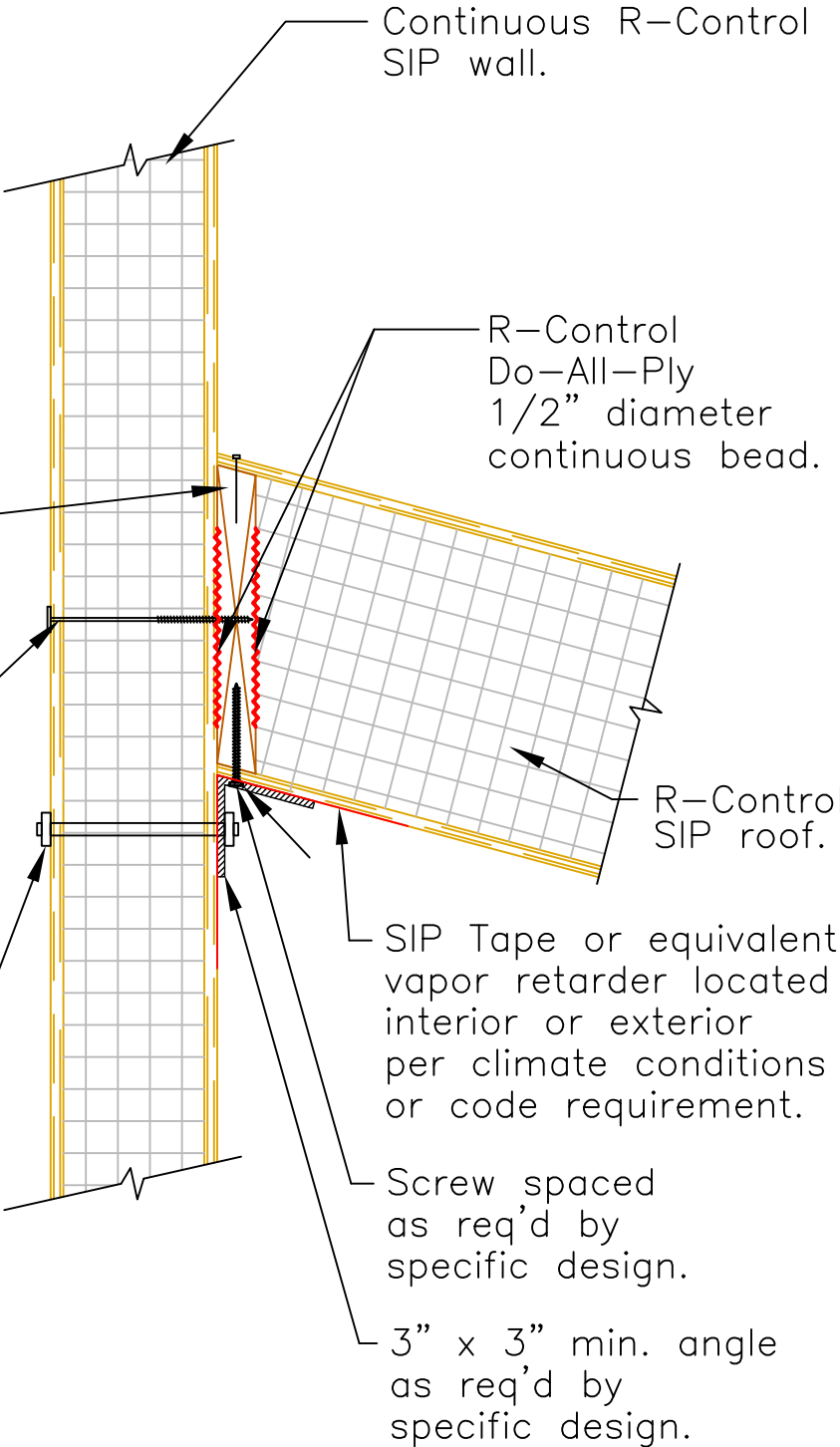
R-Control Do-All-Ply 1/2" diameter continuous bead.

R-Control SIP roof.

SIP Tape or equivalent vapor retarder located interior or exterior per climate conditions or code requirement.

Screw spaced as req'd by specific design.

3" x 3" min. angle as req'd by specific design.



**SECTION**

Scale: NTS

Updated 1-16-12

**R-Control® SIP**

TITLE: SIP Roof and Steel Angle Ledger

NO. SIP-121e